

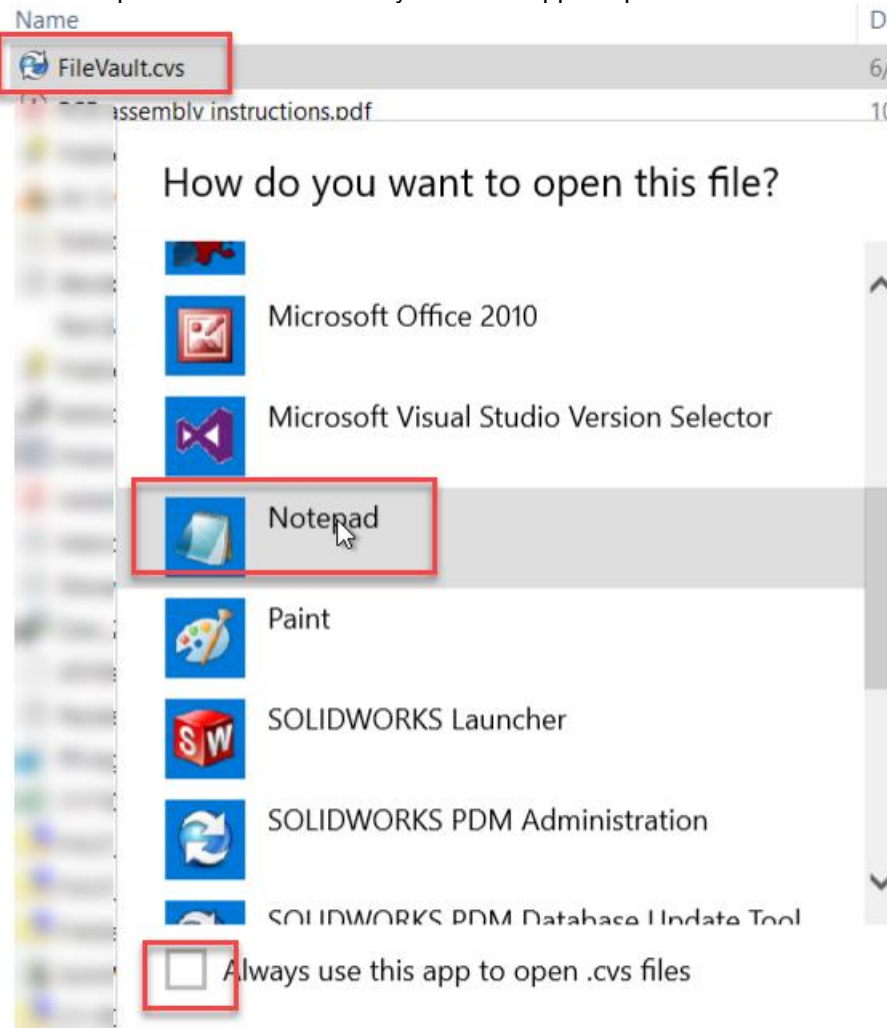
How to create a vault view using a file vault view setup (cvs) file

The following method to script a view setup file can be used if you are unable to attach to the archive server via the administration tool or view setup wizard. You can also use the .cvs file when distributing vault views via script. See install guide for more details.

You can create your own .cvs file by running viewsetup.exe /a from the SOLIDWORKS PDM install folder on a client that *does not yet* have a local vault view. Alternatively, you can edit the attached cvs file.

Prepare the cvs file

1. Copy the attached .cvs file to the archive server.
2. Open the file in a text editor, for example notepad. Make sure that you do not associate the .cvs extension with the text editor, it should remain associated with viewsetup.exe. If you use "Open with...", select Notepad and uncheck "Always use this app to open .cvs files".



3. You should edit and update the highlighted sections in the .cvs file:

```
FileVault.cvs - Notepad
File Edit Format View Help

[[{AttachSettings}]]
Location=C:\
ViewType=SharedView
[FileVault]
VaultID=32cea39a-c68b-4134-9874-088b8ab13fe8
DbName=FileVault_db
DbServer=LPT-TOR
ServerLoc=LPT-TOR
ServerPort=3030
```

Location - Folder where you want the physical view folder to be created, normally "C:\"

ViewType – "SharedView" (recommended) for a shared view that is accessible to all profiles on the system. "PrivateView" for a private view that is only accessible to the logged in profile.

[FileVault] - Update with the file vault name (note that the name is case sensitive). Keep the square brackets.

VaultID - Update with the file vault ID. You can find it in the vault properties within the administration tool, or in the archive server registry. Exclude the "{" and "}" brackets.

DbName - The vault database name (note that the name is case sensitive)

DbServer - The SQL server hostname (or instance name SERVER\INSTANCE).

ServerLoc - The archive server hostname.

4. Save the updated .cvs file

You can find the required vault details to use when you update the .cvs file in the registry on the archive server:

HKEY_LOCAL_MACHINE\SOFTWARE\SolidWorks\Applications\PDMWorks
Enterprise\ArchiveServer\Vaults\VAULTNAME

Example:

The example shows three components: a Registry Editor window, a Notepad file, and a Command Prompt.

Registry Editor: The left pane shows the tree structure: Computer\HKEY_LOCAL_MACHINE\SOFTWARE\SolidWorks\Applications\PDMWorks Enterprise\ArchiveServer\Vaults\Acme_Vault. The right pane shows the registry values for 'Acme_Vault':

Name	Type	Data
(Default)	REG_SZ	(value not set)
DbName	REG_SZ	Acme_Vault
Description	REG_SZ	
FileVersion	REG_SZ	9.0
Server	REG_SZ	vm-tiv-pdm\sqlexpress2019
SQLDbName	REG_SZ	Acme_Vault_db
VaultID	REG_SZ	4273c989-9b6c-4cbb-b0e9-08aa6aab8fc4

FileVault.cvs - Notepad: The file content is the same as the one in step 3, but with the highlighted values updated to match the registry values in the example:

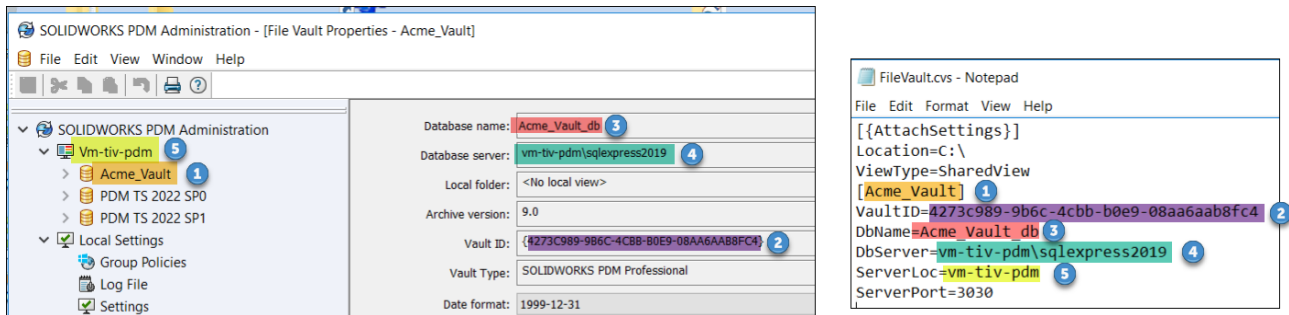
```
FileVault.cvs - Notepad
File Edit Format View Help

[[{AttachSettings}]]
Location=C:\
ViewType=SharedView
[Acme_Vault]
VaultID=4273c989-9b6c-4cbb-b0e9-08aa6aab8fc4
DbName=Acme_Vault_db
DbServer=vm-tiv-pdm\sqlexpress2019
ServerLoc=vm-tiv-pdm
ServerPort=3030
```

Administrator: Command Prompt: The command prompt shows the output of the 'hostname' command:

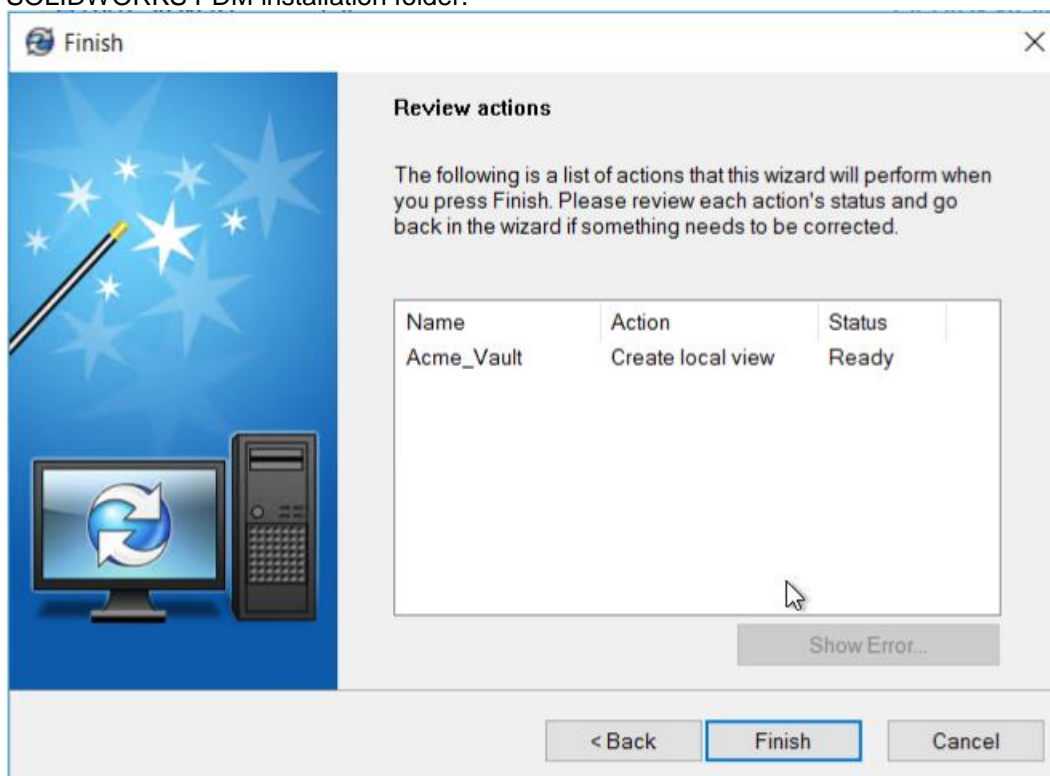
```
C:\>hostname
VM-TIV-PDM
```

Alternatively, find the details in the vault properties within the administration tool on a system that already has the vault attached.



Create the local view

To create the local vault view on a client workstation, copy the updated .cvs file and double-click the file to complete the view setup. If the file prompts for an application, select to open with "ViewSetup.exe" from the SOLIDWORKS PDM installation folder.



Note that you can also script the view setup file to run silently via:
viewsetup.exe viewsetupfile.cvs /q